

INSTRUMENT
APPROACH
CHART - ICAO

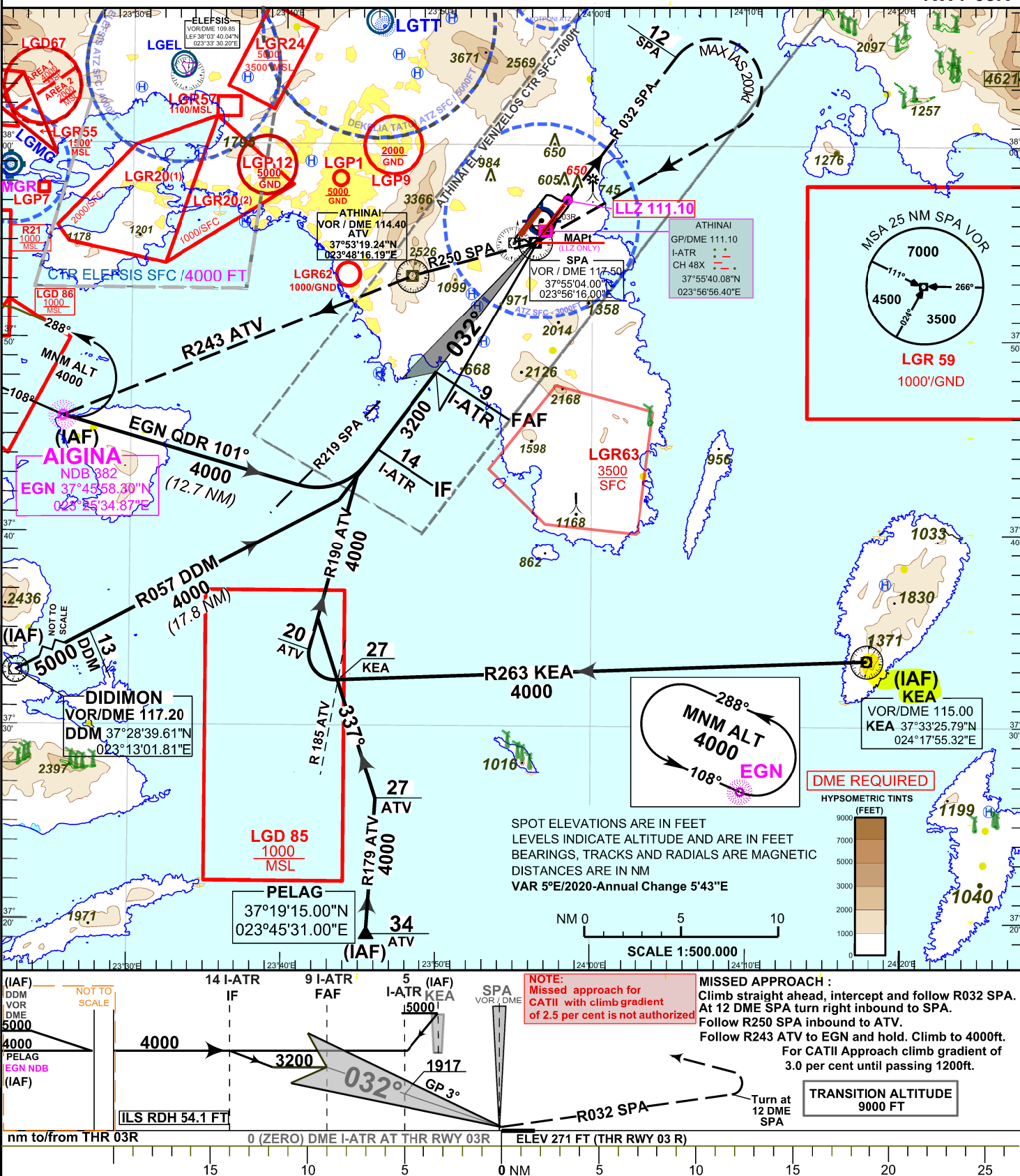
AERODROME ELEV 308 FT
THR RWY 03R ELEV 271 FT

RADAR DIRECTOR EAST 118.475
RADAR DIRECTOR WEST 121.400

TWR EAST 118.625
TWR WEST 136.275

ATHINA/ELEFTHERIOS VENIZELOS

ILSy or LOCy
RWY 03R



OCA / H	A	B	C	D	D _L
STRAIGHT-IN APPROACH (ALT/HEIGHT W.R.T. THR RWY 03R ELEV.)	CAT I FT		471 / 200		581 / 310
	CAT II FT	(See NOTE.)	421 / 150		
	LOC ONLY FT		690 / 419		
CIRCLING (ALT/HEIGHT W.R.T. TO A/D ELEV.)	1200/892	1300/992	N / A		

Rate of descent				
nm/h	100	135	160	185
ft/min	530	717	849	982
LLZ RECOMMENDED ALT				
DISTANCE I-ATR DME	4	3	2	
ALTITUDE 5.2% APPROACH	1597	1279	961	